

Pleasant Valley Recreation & Park District



Mary Otten
General Manager

Ad Hoc Committee Meeting
August 24, 2023

805.482.1996 • www.pvrpd.org

Agenda



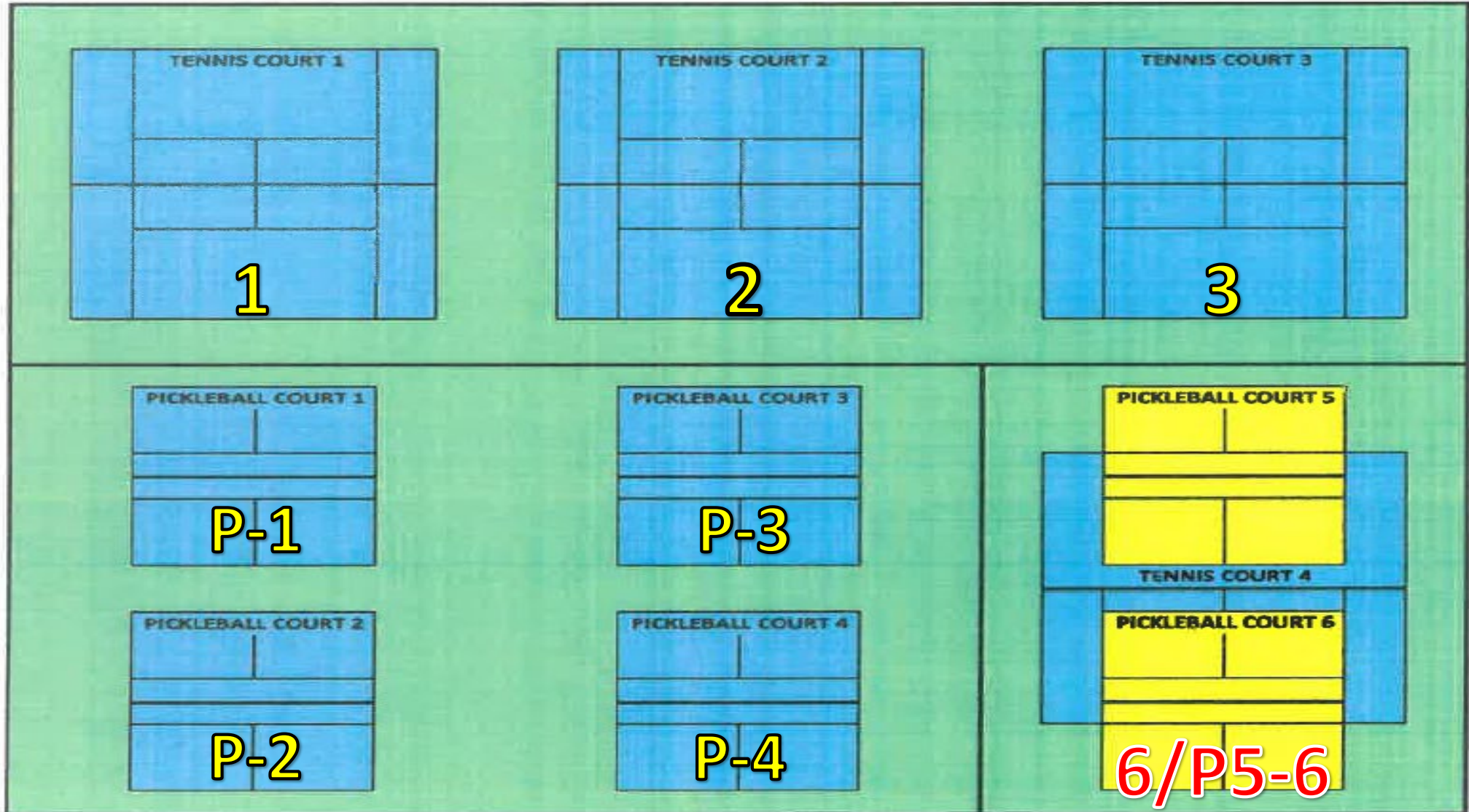
- Review of information
- Discussion & future direction on court rules
- Design Process Overview – Freedom Park Pickleball Complex
- Additional Items/Priorities

Background



- **January 2018 – Bob Kildee Community Park court conversion**
 - Project Included:
 - Resurfacing all courts
 - Converted 2 tennis courts into 4 pickleball courts
 - Making 1 court multi-use
 - Converted courts 4 & 5 back to dedicated tennis courts

BOB KILDEE TENNIS AND PICKLEBALL COURTS



Background



- **2020** – District formed an Ad Hoc Pickleball-Tennis Committee in 2020 to address further concerns
- **April 7, 2021**—Board Actions of Short & Long-Term Goals:
 - **Short:**
 - New Pickleball Pilot Program implemented at Bob Kildee Park
 - Installation of multi-use courts (1 tennis/2 pickleball) at Springville and Pitts Ranch Parks *[installed May 2021]*.
 - **Long:**
 - \$1.4M Pickleball Complex at Freedom Park
 - Ran Rancho Park Courts

Bob Kildee Comm. Park - Pilot Program



- General Court Hours: 7 am – 9 pm
- Programmatic Pilot Rules:
 - Started March 15, 2021
 - Rules were revised in March 2022
 - **Pickleball Prime Hours for Multi-Use Court**
 - Monday – Friday: 8 am – 12 pm & 5 pm – 8 pm
 - Saturday: 8 am – 12 pm
 - Sunday: 8 am – 12 pm

Pickleball Court Rules

Pilot Program at Bob Kildee Park



These rules apply to all Pickleball Courts (1- 6) during **Prime-Time** hours.

1. Tennis and pickleball players shall use the appropriate dedicated courts prior to using multi-use courts (tennis/pickleball) when vacant.
2. First come, first served unless reserved in accordance with District Ordinances & Policies.
3. Pickleball play is on a rotational basis (4 players on-4 players off) when all courts are in use and players are waiting).
4. Players waiting for a court will place their paddle in the paddle organizer. (“Next” is from left to right)
5. All players must fully vacate the court at the end of a game. No new game can start without checking the paddle organizer for waiting players.

Cont. - Pickleball Court Rules

Pilot Program at Bob Kildee Park



6. Players finishing a game must place their paddles in the paddle organizer if they wish to play again. A player may not be on a court playing, while also having a paddle in any waiting rotation.
7. The next waiting group will take the first available court. All players must be present when their court becomes available.
 - i. Groups must be 2 (singles) or 4 (doubles) players. All players must be present when their court becomes available.
 - ii. Groups of 3 must immediately obtain a 4th player or relinquish the open court to the next group; however, they may continue to hold their place on the Paddle organizer while searching for a 4th player.
 - iii. Single players are encouraged to play with first available players and cannot hold a position for friends

Cont. - Pickleball Court Rules Pilot Program at Bob Kildee Park



8. **Amplified sound** is prohibited on the courts. If players want to listen to music while they play, they must use ear buds or headphones so as not to disturb other players.
9. **Non-Prime Time Hours**: When others are waiting to use a pickleball court, play shall end on the hour (1:00pm, 2:00pm, 3:00pm etc.)
10. **Follow USAPA rules of conduct etiquette.**

Other Organization's Rules



1. When others are waiting to use a court, play shall end after one game to 11 points, win by 2.
2. Waiting party must place paddle in paddle saddle to hold next available court.
3. If courts are full and players are waiting, court time is limited to 20 minutes. Players can rotate back onto courts as many times as they desire.
4. Social court 1,2,3 and 4 players have a 2-game maximum. Winners stay and losers rotate off.
5. Challenge courts 5 & 6 winners stay until they lose. Losers rotate off.
6. If others are waiting to play, limit your play time to 1-hour for singles and 1.5 hours for doubles
7. 4 off & 4 on

(Cont.) Other Organization's Rules – Potential Changes



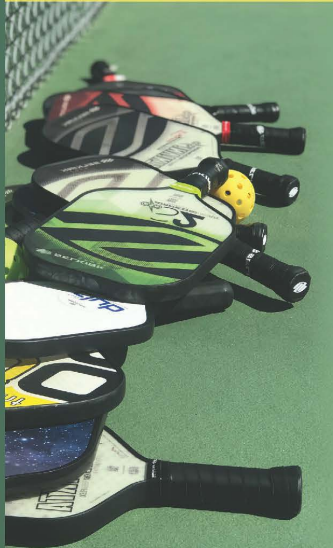
8. Non-Competitive recreational players are allowed to use a court for up to 30 consecutive minutes before rotating out.
9. Waiting party must place paddle in paddle saddle to hold next available court.
10. Once all courts are full, and any number of players are waiting, play rotation takes effect.
11. Courts are designated for “Open Play” and are unable to reserve with the exception of City/District approved programs.
12. Recreation department programs have priority use.
13. No private pickleball lessons for compensation permitted.
14. Only one all day event rental allowed per month on weekends.

(Cont.) Other Organization's Rules – Potential Changes.



15. Non-Resident rentals not allowed.
16. 2 Courts during a tournament must remain open for general/open-play use.
17. 50% rule where courts can not be used for scheduled play/lessons more than 50% of the time, thus this leaves 50% for drop-in play at all levels.

PICKLEBALL VENTURA



Designated Pickleball Times:

Harry A. Lyon Park
150 De Anza Dr., Ventura

TUESDAYS
3:30 pm - Dusk

SATURDAYS
9 am - 12 pm

Juanamaria Park
Kimball Rd. & Loma Vista Rd.

THURSDAYS
3:30 pm - Dusk

SUNDAYS
2 pm - Dusk

**ALL OTHER TIMES ARE FIRST COME FIRST SERVE
BASIS FOR BOTH PICKLEBALL & TENNIS**

www.cityofventura.ca.gov/pickleball

CITY OF
VENTURA
PARKS & RECREATION

PICKLEBALL COURT RULES



Court Hours: 8:00 a.m. to Sunset

Unless otherwise posted

USE OF COURTS

If reserved, the renting party shall have exclusive use of the reserved court during the rental times listed on the approved rental permit. When not reserved:

If all four courts are in use, and others are waiting to use a court, play shall end after one game to 11 points, win by 2. Waiting party must place one paddle on the waiting board to hold the next available court.

When a court becomes available, the first waiting party shall remove their paddle from the waiting board and proceed to the court. Waiting parties, if any, shall move their paddle to the next position in line.

Waiting individuals/groups must be present when a court becomes available.

- A court shall not be held while waiting for players to arrive.
- Those waiting to play may not hold a court for someone else already engaged in play.
- Those playing may not hold another court for themselves while playing.
- Only one paddle per group may be placed on the waiting board, whether doubles or singles.

ONLY ACTIVITIES APPROPRIATE TO A PICKLEBALL COURT ARE PERMITTED



Only non-marking soles/wheelchairs



No skates of any kind



No motorized toys/vehicles



No animals



No food or drinks



No pulling, stretching, sitting on net

RENTAL PERMITS REQUIRED FOR:



Groups of 25+
(10+ if recurring use)



Setting up equipment



Amplified sound



Fee-based and commercial activities, sales, & vending



Exclusive Use

WHO TO CALL

RENTAL PERMIT INFO: ARROYO VISTA RECREATION CENTER (805) 517-6300
REPORT A HAZARD: CITY OF MOORPARK PARKS MAINTENANCE (805) 517-6200
REPORT RULES VIOLATIONS: MOORPARK POLICE DEPARTMENT (805) 532-2700
IN CASE OF EMERGENCY, CALL 9-1-1



For complete rules, see Moorpark Municipal Code 12.16 at MoorparkCa.gov

CITY ORDINANCES, RULES, AND REGULATIONS WILL BE ENFORCED. VIOLATIONS SUBJECT TO CITATION IN ACCORDANCE WITH THE MMC.



PICKLEBALL COURTS 1-6 - RULES

Pickleball play is on a rotational basis (4 on 4 off or 2 on 2 off) when all courts are in use and players are waiting. Players waiting for a court will place their paddles in the Central Paddle Bracket ("Next" tab moves left to right).

All players must fully vacate the court at the end of a game. No new game can be started without checking the Paddle Bracket for waiting players.

Players finishing a game must place their paddles in the Paddle Bracket if they wish to play again.

The next waiting group will take the first available court. Groups must be 2 (singles) or 4 (doubles) players.* All players must be present when their court becomes available.

A player may not be on a court playing and have a paddle in any rotation.

A player may not be waiting in two positions simultaneously anywhere at any time. Courts cannot be used for practice, drills, warm-up, etc. when there are waiting players.

Games are played to 11 points, win by 2.

*Groups of 3 must immediately obtain a 4th player or relinquish the open court to the next group; however, they may continue to hold their place on the Paddle Bracket while searching for a 4th player.

CHALLENGE COURT 6 RULES

There must be at least 3 challenge teams to sustain the Challenge Court, otherwise Court 6 becomes part of the rotational courts. (The same four challenge players cannot hold the court for more than one game).

Winners can hold court for a maximum of 2 games in a row; winners then must vacate the court. Two new challenge teams then take the court. (If only one team is waiting, losers may remain on the court to take the challenge).

Once there are at least 2 challenge teams, their paddles are to be placed in the Challenge Court Paddle Bracket, and at the end of the game in play, the court reverts to a Challenge Court.

Challenge Court games are to 11 points, win by 2.



DEBORAH SAMPSON PICKLEBALL COURTS

RULES/ETIQUETTE:

Use at your own risk.

Proper footwear is required.

Please do not abuse the net or other equipment.

Good sportsmanship and courtesy is expected at all times.

Carry in, Carry out any trash.

Keep all personal items outside courts.

Do not walk across or behind courts until play is stopped.

Wait to play outside the court in designated seating areas.



GAME PLAY:

Promptly vacate the court at end of each game.

Utilize the white board and/or paddle rack system to establish order.

No singles play while others are waiting.

Games are played to 11 points - win by two. If there are 12 or more players waiting, play games to 9 points.

The following is not permitted inside the courts:

- Food, gum, glass or alcoholic beverages
- Pets
- Bicycles, skateboards or rollerblades

The Town of Sharon does not allow paid instructors to conduct business for profit on public facilities. Please contact the Recreation Department should you have any questions.



Pickleball Court GUIDELINES

- » The Pickleball Courts are designated for "Open Play" and are unable to reserve with the exception of City approved programs
- » Bikes, in-line skates, skateboards, roller skates, and dogs are not allowed on the courts
- » Be respectful and inclusive of players at all levels and ages

When All Courts Are Full

- » Groups must rotate after the completion of the game
- » Play one game to 11 points and then rotate off the court
- » Players waiting to play should place paddle in the paddle organizer in order of arrival
- » Players waiting for a court cannot skip over a partially filled group in front of them
- » This applies to all players, including foursomes who prefer to stay together

Enjoy the Park!



PICKLEBALL COURTS

- * Court hours: 9:00AM until dusk.
- * Use pickleball courts at own risk.
- * No dogs allowed on the courts.
- * No bicycles, roller blades or skate boards.
- * Proper footwear required.
- * Do not abuse the net or other equipment.
- * Courts are for pickleball use only.
- * Pickleball courts are closed to the public when Andover Rec Pickleball Programs or Recreation Park Programs are in session.
- * No food or glass containers in the court area.
- * Drugs, alcohol and smoking are strictly prohibited.
- * Trash - carry in, carry out policy.
- * Town of Andover is not responsible for any accidents or injuries while using this facility.
- * Children under the age of 15 must be accompanied by an adult.



THE CITY OF DALLAS REGION
PICKLEBALL COURT RULES

Please help us maintain our pickleball courts

- Pickleball courts will be open daily from dawn to dusk
- Tennis shoes or soft soled shoes only
- Players are required to observe proper pickleball etiquette
- Those persons waiting to play must wait outside the pickleball court
- If others are waiting to play, please limit your play time to 1 hour for singles and 1 1/2 hours for doubles
- Not allowed on court
 - Smoking/Vaping
 - Glass Bottles
 - Bicycles
 - Skateboards
 - Rollerblades
 - Scooters

Enjoy the court!

The City of Dallas
It's a HEAL City



For questions or concerns please contact the City of Dallas Parks Department 503.831.3502



Pickleball Court Rules



1. Only Pickleball is allowed on the courts
2. Please be respectful, welcoming, and inclusive of players of all skill levels
3. During competitive play, when other players are waiting, players are expected to play one game to 11 points and then rotate out
4. Non-competitive recreational players are allowed to use a court for up to 30 consecutive minutes before rotating out.
5. Players waiting to play should place their paddles in the paddle organizer
6. When there are no patrons waiting for courts there are no time limits for court use.
7. Athletic shoes must be worn at all times
8. Do not walk behind a court when the ball is in play
9. Pickleball programs organized through the Parks & Recreation Department have priority on the courts
10. Inline skates, skateboards, and bikes are not allowed on the courts
11. Private Pickleball lessons are not allowed without a permit
12. Please park on the park side of the street
13. Snow removal from the courts is not allowed in any form as it damages the playing surface

Thank you for your support of the pickleball courts in Golden Valley.

Wildwood Park
7401 Duluth St
763-512-2345
www.goldenvalleymn.gov



PICKLEBALL COURT RULES

- 1 Courts are for Pickleball Use Only
- 2 Hours of Play: 7 a.m. to 10 p.m.
- 3 Proper Attire & Equipment Required
- 4 Courts are first come, first serve unless otherwise designated for a special program, activity, or event
- 5 Waiting players will place their paddle in the rack to reserve their place in line
- 6 No alcoholic beverages, glass, food, or smoking
- 7 No Unauthorized paid athletic services or lessons
- 8 Please observe proper Pickleball etiquette

CITY OF LAWRENCE PARKS AND RECREATION

Pickleball Rules

1. Courts are for pickleball only.
2. Courts hours are 8 a.m. – 10 p.m. daily.
3. Court lighting is available until 10 p.m. Turn lights on with the time dial on light post.
4. Place paddles in a single line to wait for play.
5. Social court 1, 2, 3 and 4 players have a two game maximum. Winners stay but split. Losers rotate off.
6. Challenge courts 5 and 6 winners stay until they lose. Losers rotate off.
7. If over 8 players waiting, play shall be 4 on – 4 off.
8. Private lessons are prohibited.
9. No dogs allowed.
10. No skateboarding.
11. Exercise courtesy, respect and good sportsmanship at all times.
12. Visit usapa.org for more pickleball information.

Carlsbad Municipal Code Sections 10.58, 11.32, et seq.

Emergencies 9-1-1
 Police Non-Emergency 760-931-2197
 Parks & Recreation 760-602-4690

City of Carlsbad

4 OFF & 4 ON

COURTS 13-16

When unreserved courts are full and others are waiting to play, courts cannot be used by the same four players for more than one game to 11 points

1. Players waiting to get on an unreserved court should place paddles in provided rack, in order of arrival.
2. When a game is finished, all four players will vacate the court.
3. When one of the unreserved courts is vacated, those "Next Up" should move the clip to the next position and take the court.

Clearfield City we've got it made.



Pickleball Courts

Hours: Sunrise to 11 pm

Rules:

1. Courts are first-come, first-served.
2. After dusk, push button to activate lights.
3. Properly remove and dispose of your trash.
4. Animals, glass containers, and recreational activities other than pickleball are prohibited on the court.
5. Use of the court for business purposes including paid class instruction or commercial photography is prohibited unless authorized by permit.

Etiquette and Play Rotation:

- All skill levels are welcome. Players are encouraged to choose a court based on skill level.
- Once all courts are full, and any number of players are waiting, play rotation takes effect.

How to Start Play Rotation

1. Waiting players secure their spot by stacking their paddle on the net posts at one court of desired play.
2. Once a paddle is stacked at a court, a two-game maximum play goes into effect for existing players.
3. Existing players should finish their current game to 11 points and can play a second game to a maximum of 11 points.
4. After the second game, waiting players rotate in.



For additional court locations
scan the QR code or visit
MontgomeryParks.org/Sports

301.949.8010 Park Police | Policía del Parque
301.495.2525 Permits | Permisos
301.495.2595 Customer Service | Servicio al Cliente



By authority of the Maryland-
national capital park and
recreation commission
Por la autoridad de la comisión
de la recreación de parques
de la Capital Maryland-nacional

MontgomeryParks.org



City of
Maple Grove
Parks & Recreation Board

PICKLEBALL

CENTRAL PARK

12000 Central Park Way


COURT SCHEDULE:

- Monday - Friday, 7-11am Open Play *
Beginner & Recreational level players.
- All other times are Dedicated Play **
All levels are welcome.

STYLES OF PLAY:

* Open Play (Drop in Community Play) - Court schedules identified as 'Open Play' provide drop in participation, where players are cycled into games allowing for different partners and different opponents each game. This type of play welcomes single players or couples, since players are mixed after each game. Players must provide their own equipment to play. Upon arrival to the courts, place your paddle at the end of the line. When a game is finished, All 4 players come off the court and the next 4 players waiting in line begin play on the vacated court. The players that just came off the court place their paddles at the end of the line, to wait their next turn. This cycle continues through the scheduled Open Play hours.

** Dedicated Play (Individual Play) - Court schedules identified as 'Dedicated Play' are first come first served, allowing for single person practice, singles play (2 people playing), or a dedicated group only playing amongst themselves. Players must provide their own equipment. Courts should be released on the hour if players are waiting.

The City of Maple Grove has first priority use of these  and may program them for City sponsored events. Private lesson instruction or use of this space for profit is not allowed.

Open Daily Dawn to Dusk



HAVE FUN • BE SAFE

The courts are intended for pickleball only.

- Required proper equipment: pickleball paddles & ball
- Be considerate of USAPA player rules. Help others who do not know the accepted court courtesies.
- Every attempt should be made to keep balls confined to your court.
- If other players are waiting, limit your playing time to one game to 11 points.
- Return balls that roll onto your playing area quickly.
- Always cross behind an occupied court.
- Close the gate behind you when entering or exiting the courts.
- A permit is required for private instruction.
To inquire about a permit, call 630-584-1885.
- Please be courteous of other park users. No profanity.
- Help keep the courts clean. Please recycle.

Emergencies Dial 9 1 1

To report any suspicious activities, call Park Safety at 630-513-4343.
For other issues or questions, please call the Parks Department at 630-584-1885.



The St. Charles Park District reserves the right to close the courts at any time.

stcparks.org

Welcome to BUTTERWORTH PARK

PICKLEBALL COURTS

Recommended "preferred" times For Pickleball Play

Mon – Wed – Fri – Sat

2:00PM – 5:00PM

Tu – Thu – Sun

8:00AM – 12 Noon & 5:00PM – Dusk*

(* later if lights are on)

WHEN USING COURTS

- Please be respectful to those waiting to play
- Please make sure to make it clear that you are waiting for a court
- Winners have no prior rights to remain on courts
- Recommended time limits:
 - **Single Play** limited to 45 minutes
 - **Double Play** limited to 60 minutes
 - **Option** – play games to 9, 11, or 15; win by 2 points

City of Framingham Parks & Recreation Department
508-532-5960 - parks.recreation@FraminghamMA.gov



Discussion & Further Direction



- Court Signage
 - Rotational Rules
 - Challenge Court
 - Court Hours
 - Court Designation times
 - Other/Discussion



Long Term Projects Updates

Long Term Projects



- **April 7, 2021**—Board Actions of Long-Term Goals:
 - Long Term:
 - Ran Rancho Park
 - Pickleball Complex at Freedom Park

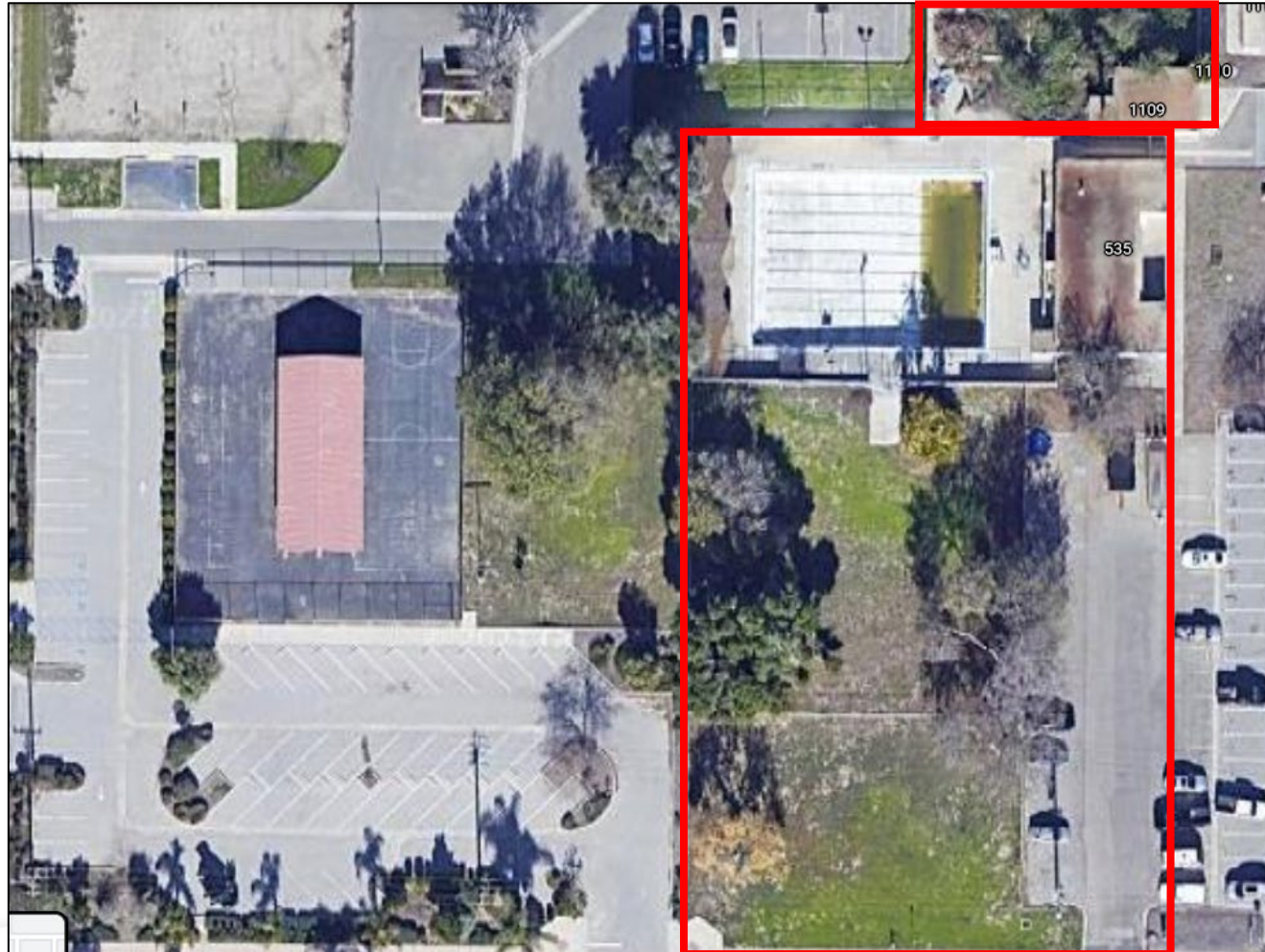
Ran Rancho Development

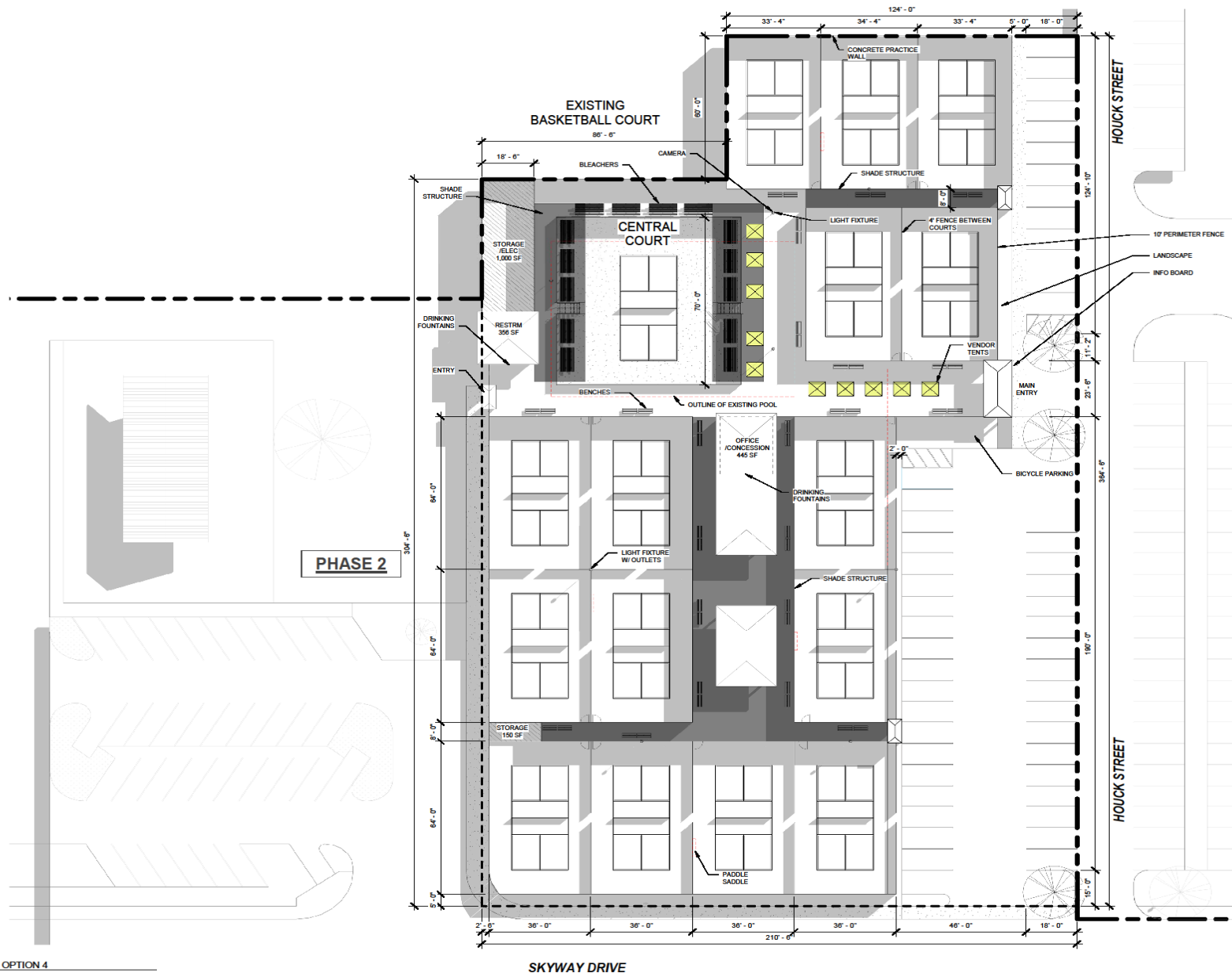
- Estimated: 2025
- 4 dedicated pickleball courts (no lights)



Freedom Park Complex Updates

- Convert Pool
- Board approved \$1.4M



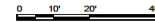


DESIGN FEATURES	
COURTS:	15 EA
CENTRAL:	1 EA
PARKING:	49 STALLS
<ol style="list-style-type: none"> EXPANDED PARKING. ENTRANCE ON SKY DRIVE CENTER COURT IN POOL AREA WITH SLOPED SEATING. AMENITIES AND RESTROOMS ARE IN THE CORNER. MAXIMIZE SITE FOR MAXIMUM COURTS AND PARKING. STRONG PEDESTRIAN ACCESS AND SEATING. LANDSCAPE AROUND PERIMETER. MULTIPLE POINTS OF ENTRY CENTRAL VENDOR LOCATION AREA FOR STORAGE CENTER AREA SHADED FOR SOCIAL GATHERINGS RESTROOM SET UP FOR EXPANSION FOR PHASE 2. VISIBLE FROM ENTRANCE SHADED WALKWAYS. SEATING PROVIDED FOR ADJACENT TO COURTS. FENCES CREATE OPPORTUNITIES FOR SPONSORSHIP 	

1 SITE PLAN - OPTION 4
1" = 20'-0"

SKYWAY DRIVE

HOUCK STREET



SITE PLAN - ALTERNATE

PICKLEBALL COMPLEX CENTER FOR
PLEASANT VALLEY REC & PARK DISTRICT
PROJECT ADDRESS: 535 HOUCK STREET, CAMARILLO, CA 93010



Fiscal Updates

- Design
- Soils Reports
- Surveys
- Asbestos & Lead removal
- Parking Study
- Permits, Fees

Committed = \$1,400,000.00

Spent = \$ 148,576.31

Balance = \$1,251,423.69

Potential Next Steps



- Bring back updates to Ad Hoc