



# Senior and Community Recreation Facility

Community Workshop #2: June 6, 2019

# Workshop Agenda

- |   |                             |           |
|---|-----------------------------|-----------|
| 1 | Sign-in & Introductions     | 6:30-6:45 |
| 2 | Schedule/Process Overview   | 6:45-7:00 |
| 3 | Workshop #1 Summary         | 7:00-7:30 |
|   | 3a Programming Exercise     |           |
|   | 3b Space Planning Exercise  |           |
| 4 | Tonight's Workshop Exercise | 7:30-8:15 |
| 5 | Next Steps/Conclusion       | 8:15-8:30 |

# Project Schedule



Interview/Team Selection

February 11, 2019

Preplanning Services

kickoff, gather background resources

March 26 – April 22, 2019

Community Outreach

community workshop 1 - programming

April 23, 2019

Conceptual Site Planning, Building Design

April 24 – June 5, 2019

**Community Outreach**

community workshop 2 – site planning

June 6, 2019

Cost & Operational Estimates, Renderings Production

Executive Review

liaison committee workshop 3

final presentations

July 9, 2019

TBD

# Workshop #1 – What we learned

## BIG IDEAS

- Areas Specifically Dedicated to Seniors
  - Look at other senior centers for programs
- Cost: Financeable, Buildable & Sustainable
- Reasonable Operational Budget: Revenue vs. Service

# WS#1 Review: Workshop Exercises

# WS#1 Review: Workshop Exercises

## Character/Program Preferences

### Drop-off Area

FUNCTION | **activity**

CHARACTER | **spirit**

ATTRIBUTES | **traits**





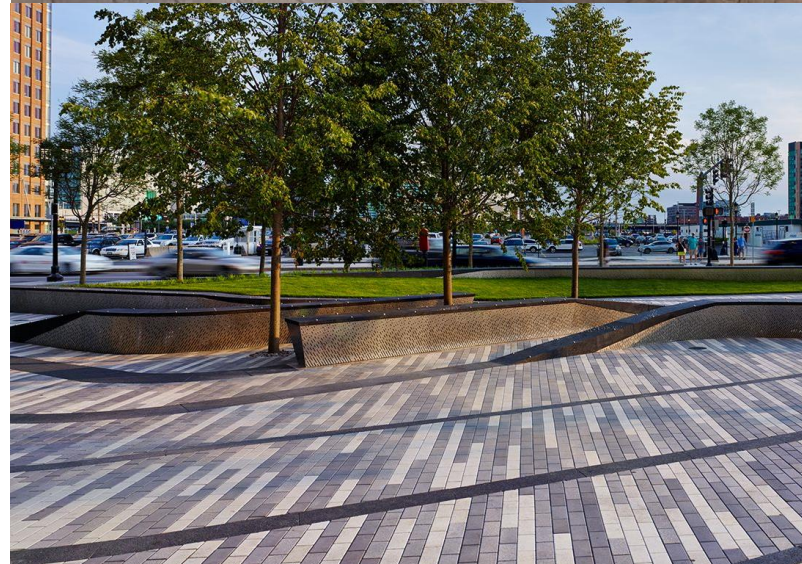
# WS#1 Review: Workshop Exercises

## Arrival Plaza

FUNCTION | **activity**

CHARACTER | **spirit**

ATTRIBUTES | **traits**





# WS#1 Review: Workshop Exercises – what we heard

## Drop-Off

- Parking for larger vehicles
- **Need more benches at drop-off**
- Provide loading zones
- Provide room for circulation
- **Safety is important**
- Removable bollards
- **Provide shade**

## Arrival Plaza

- Space for CAT & Senior bus
- **Seating for social meeting**
  - Accessible Seating
  - Current no seating
- **Well lit**
  - At arrival plaza
  - At parking lot

## Activity Garden

- Meditation Garden/Labyrinth

## Outdoor Recreation

- Splash pad
- **Art in public spaces**
- Water features... think about the drought season impact
- Drought tolerant landscape

## Yoga Plaza

- Indoor/outdoor recreation
- Outdoor sound system
- **Double as outdoor performance space**
- Seniors don't like to exercise outside in winter
- Play structure outside needs to be maintained & augmented

# WS#1 Review: Workshop Exercises – what we heard

## Bocce Court/Lawn Bowling

- Like these programs
- Try to find multi-purpose/use spaces

## Entry Lobby

- **Bright & open**
- Natural light
- Safety/Security
- Provide seating
- Restroom w/push button for ADA
- **Gallery for senior paintings**
- See Santa Clarita Guide Dogs for the Blind

## Community Rooms

- **Bingo...Need screens & more space**
- Need Plumbing for art programs
  - Dedicated art rooms
- Billiards room

## Large Multi-Purpose Room

- **Large operable windows/walls**
- Acoustics
- Comfortable seating
- Ability to darken windows
- Sound system
- kitchen

## Activity Room

- Ping pong
- Billiards/ping pong... convertible games
- **Need more space**
- **Need more storage**

## Multi-Purpose Gym

- Overlay Pickle Ball courts on Basketball
- **Flexible to adapt for future uses**
- Is existing auditorium adaptable for gym use

# WS#1 Review: Workshop Exercises – what we heard

## Fitness

- Zumba & Aerobics
- Not needed... Lots of private gyms in the community

## Locker Room

- Single gender

## Outdoor Lounge

- BBQ
- Shade
- Food trucks
- Moveable furniture
- Near Kitchen
- Shade structure w/solid covering

# WS#1 Review: Workshop Exercises

Space Planning Exercise  
-break into small table groups-

Small Group Exercise  
distribute scaled site plan  
distribute room space templates  
floor planning charrette

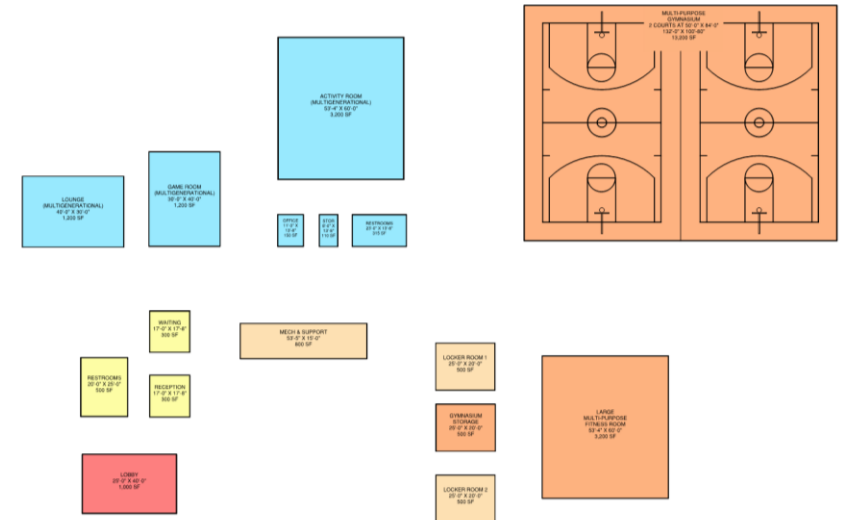




# WS#1 Review: Workshop Exercises



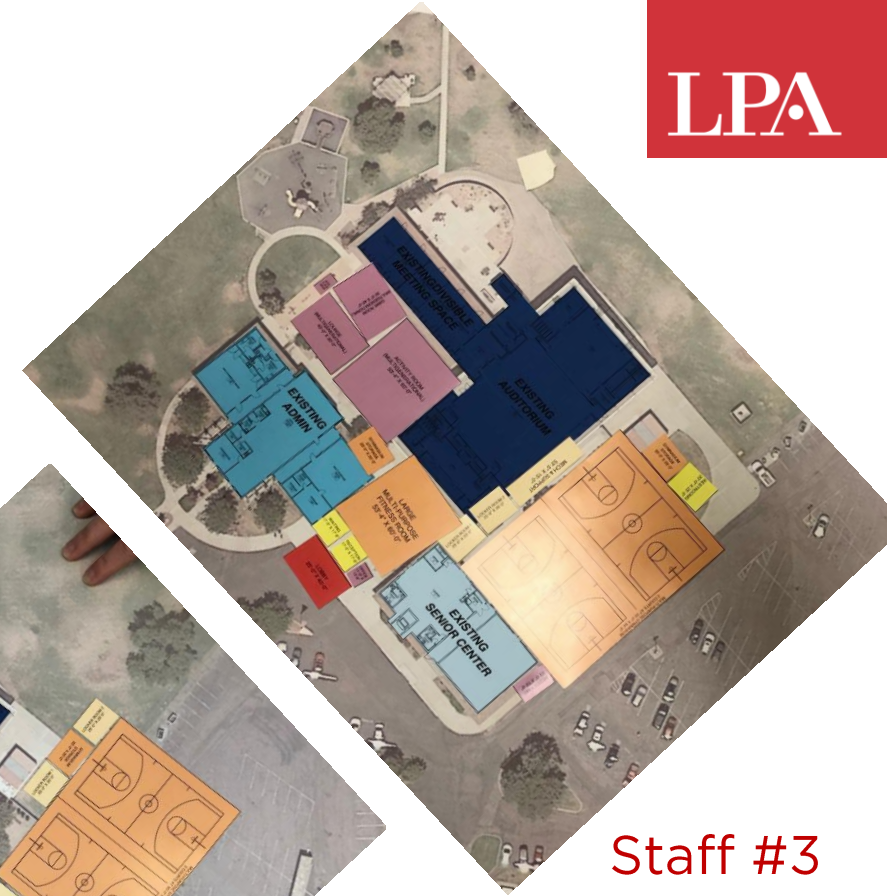
Program Blocks  
-kit of parts for users to arrange on site plan





# WS#1 Review: Theme – East Infill

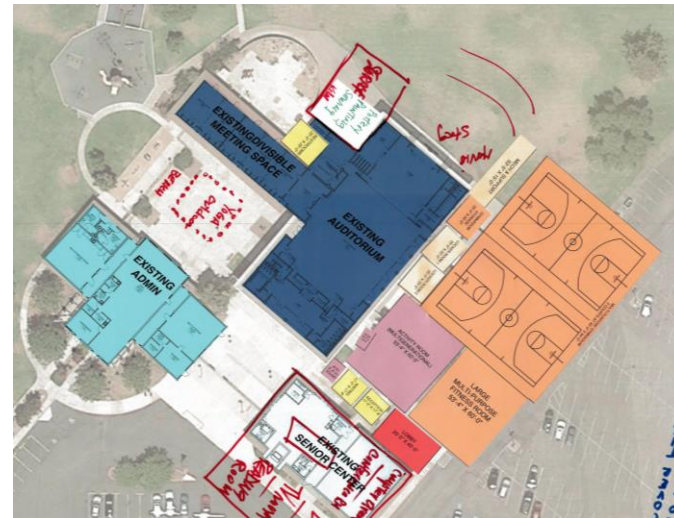
- East and south side expansion
- Self-describe “Events Center”
- Leaves intact existing auditorium, classrooms, admin. building
- New senior wing
- Distinct similarities across all three group plans



Staff #3



Staff #4



Group 3



Group 1

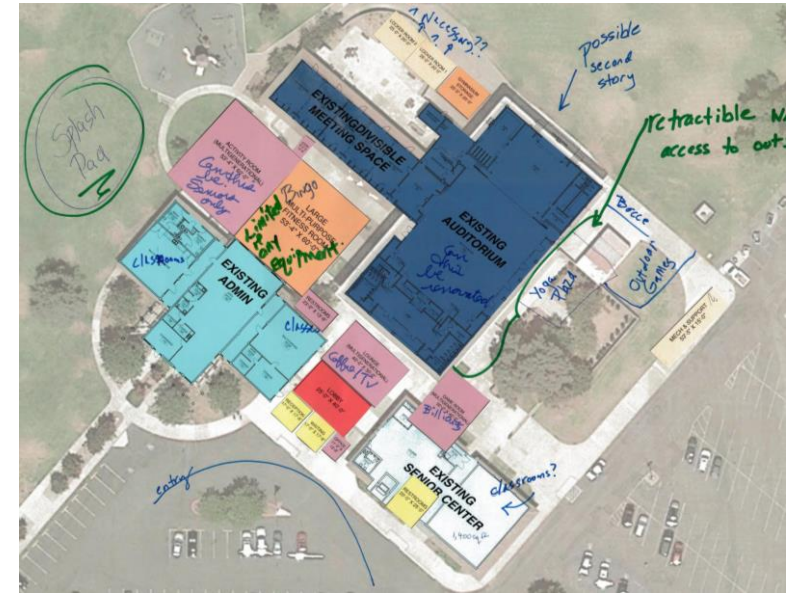


# Theme - Preservation

- “Preserve Landscape”; works within existing footprint



Group 5



Group 7



Group 6

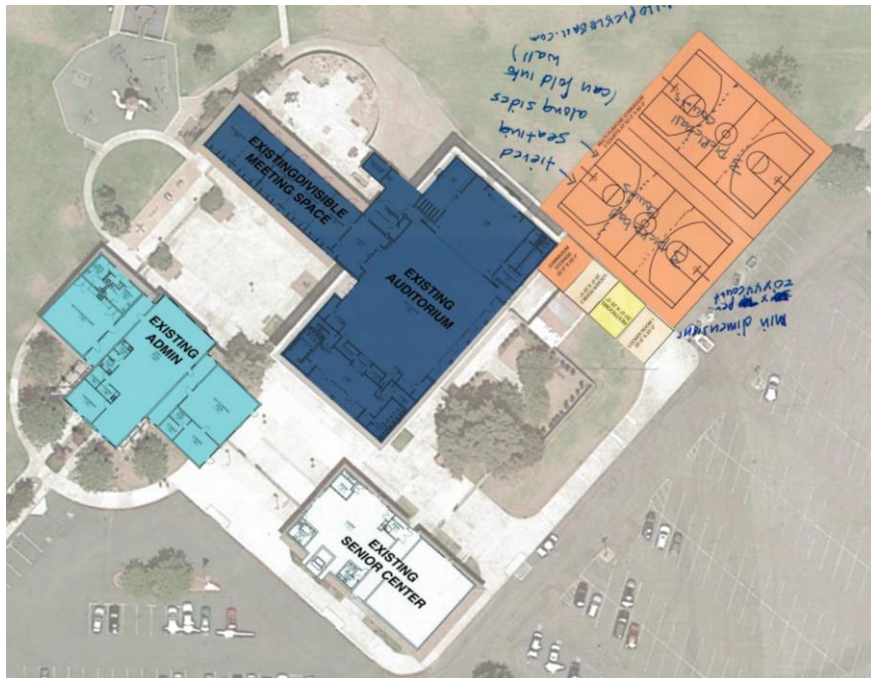


Group 8



# Theme - Expansion

- Expand facilities to the north



Group 2



Staff Plan 2



Staff Plan 1



# Plan Refinement into Design Options

# Option A



# Option A

Entry Facade

LPA





# Option A

East Facade

LPA





# Option A

West Facade

LPA





# Option A

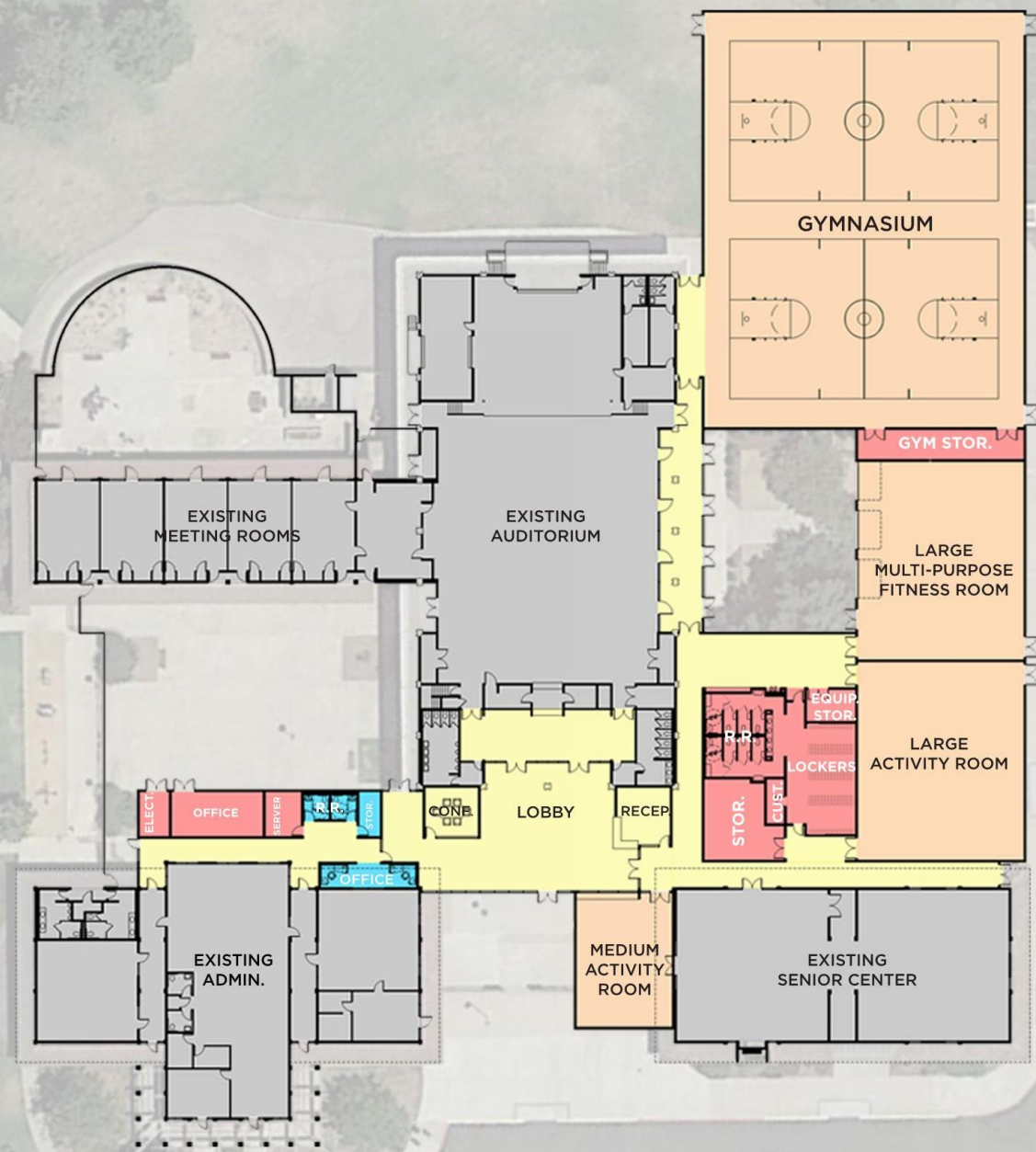
Bird's Eye

LPA





# Option B



# Option B

Entry Facade

LPA





# Option B

East Facade

LPA





# Option B

West Facade





# Option B

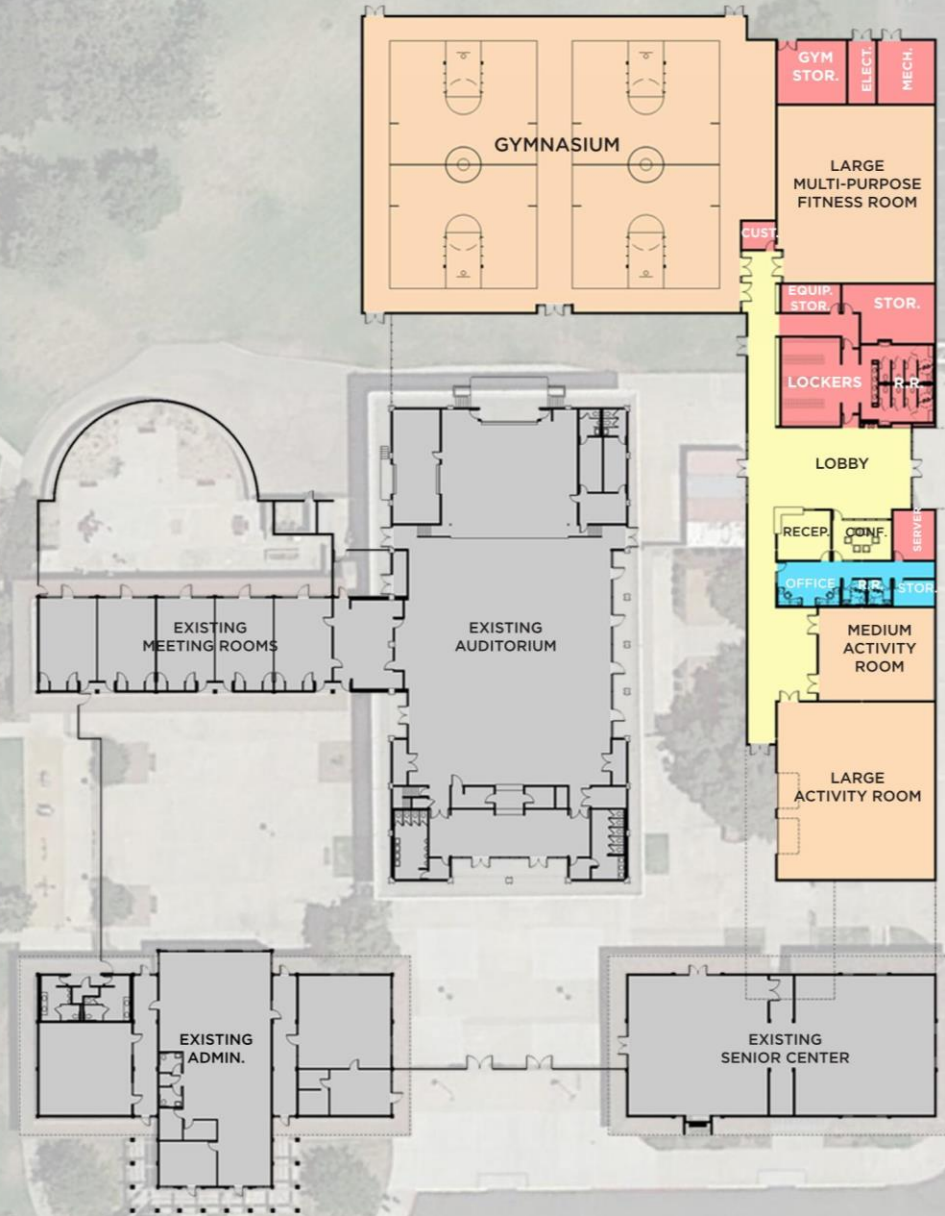
Bird's Eye

LPA





# Option C



# Option C

East Façade & Entry

LPA





# Option C

West Facade

LPA





# Option C

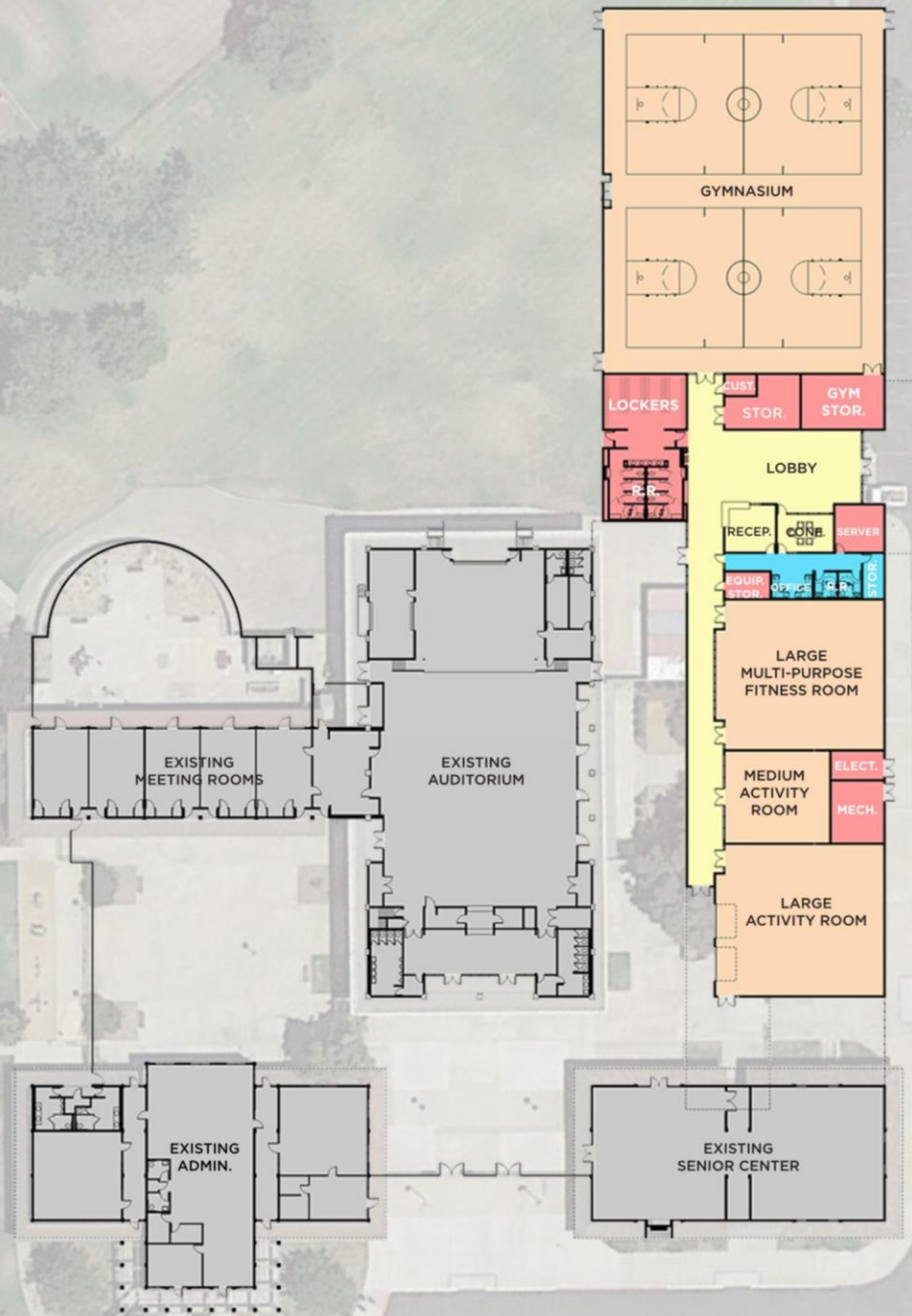
Bird's Eye

LPA





# Option D





# Option D

East Façade & Entry

LPA





# Option D

West Facade

LPA





# Option D

Bird's Eye

LPA





Tonight's Exercise  
Preliminary Options A, B, C & D  
Planning  
Design  
Feedback

# Next Steps

Cost & Operational Estimates, Renderings Production

liaison committee workshop 3

July 9, 2019

final presentations  
(joint Council/District public meeting)

TBD



Changing Lives by Design™